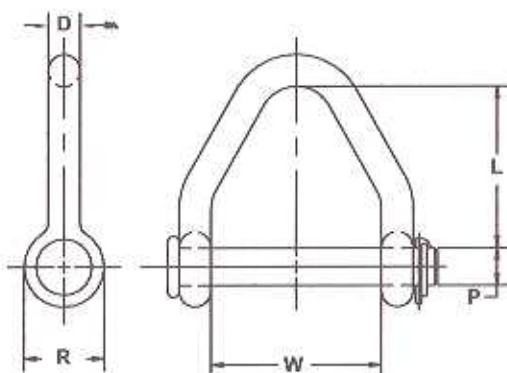


Carbon Web Sling Shackle



- Finish: hot dip galvanized.
- Klik pin (zinc plated) as shown furnished as standard-cotter or hair pin can be furnished on special order.
- Shackle body: carbon steel, heat treated.
- Shackle pin: alloy steel, heat treated.
- Tolerances: 11/32" unless otherwise indicated.
- Design ultimate strength equals 4 times the working load limit.

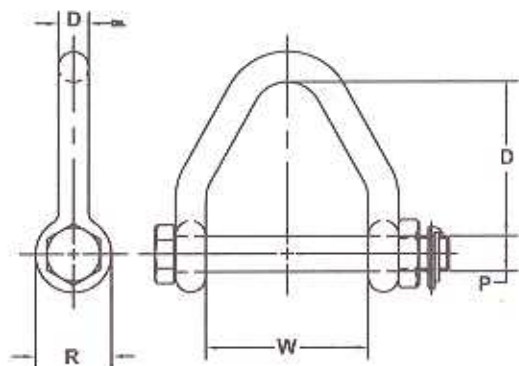


Product Code	Pin Number	Linch Pin Number	Working Load Limit	P	D	L	W	R	Weight
Imperial									
			lb.	in.	in.	in.	in.	in.	lb.
M702	2X702	65930	8,050	0.75	0.63	2.25	2.00	1.63	1.70
M703	2X703	65930	13,050	0.88	0.75	3.25	3.00	1.88	2.86
M704	2X704	65930	10,800	0.88	0.75	3.75	4.00	1.88	3.15
M705	2X705	65934	18,000	1.00	0.88	4.25	5.00	2.13	4.75
M706	2X706	65934	18,000	1.13	1.00	4.75	6.00	2.38	6.75
M706H	2X706H	65934	23,850	1.25	1.13	4.75	6.00	2.63	9.80

Alloy Web Sling Shackle



- Web Sling Shackles can be used on web slings from 3 to 6 inches in width
- Utilize a bolt and nut with linch style pin to secure the assembly in place
- All shackles are galvanized for longer life
- Marked with working load limit (WLL) and size



Product Code	Pin Number	Linch Pin Number	Working Load Limit	P	D	L	W	R	Weight
Imperial									
			lb.	in.	in.	in.	in.	in.	lb.
M703A	2X8703A	65930	13,050	0.88	0.75	3.25	3.00	1.88	3.01
M704A	2X8704A	65930	14,500	0.88	0.75	3.75	4.00	1.88	3.16
M705A	2X8705A	65934	19,000	1.00	1.00	4.25	5.00	2.38	6.04
M706A	2X8706A	65934	22,500	1.13	1.13	4.75	6.00	2.63	9.02